

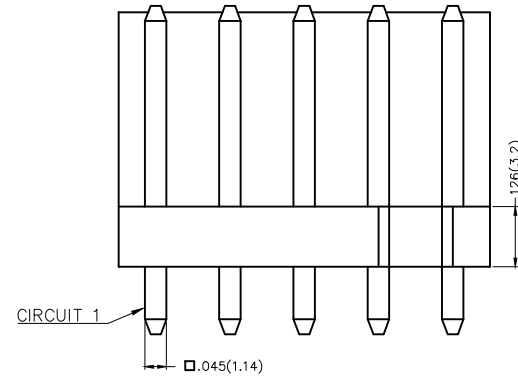
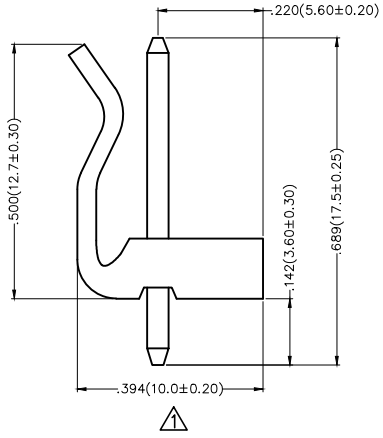
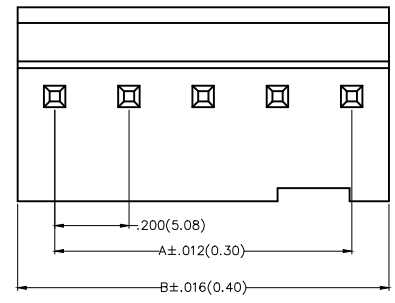
REV	LOCATIONS	DESCRIPTION	DATE	REVISER	APPD
1	△	Dimensions&Flame Rating update	19/DEC/23	MATT	LEO

**Electrical**

Current Rating: 5A AC(rms)/DC  
 Voltage Rating: 250V AC(rms)/DC  
 Contact Resistance: 20 mΩ Max  
 Insulation Resistance: 1000 MΩ MIN  
 Withstanding Voltage: 1500V AC r.m.s  
 Temperature Range—Operating: -25°C~+85°C

**Material and Plating**

Housing: PA66( UL 94V-2)△  
 Contact Pin: Brass  
 Plating: Tin Plated



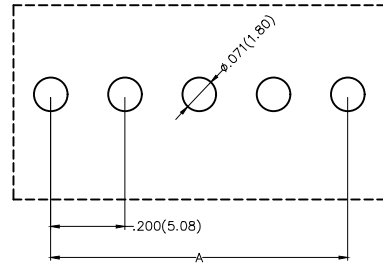
Material and Plating : Housing PA66 UL94V-2 ,Tin Plated.

Circuits (n)	Part No.	Dimensions(in/mm)	
		A	B
2	FWF50805-S02S22TB	.200(5.08)	.400(10.16)
3	FWF50805-S03S22TB	.400(10.16)	.600(15.24)
4	FWF50805-S04S22TB	.600(15.24)	.800(20.32)
5	FWF50805-S05S22TB	.800(20.32)	1.000(25.40)
6	FWF50805-S06S22TB	1.000(25.40)	1.200(30.48)
7	FWF50805-S07S22TB	1.200(30.48)	1.400(35.56)
8	FWF50805-S08S22TB	1.400(35.56)	1.600(40.64)
9	FWF50805-S09S22TB	1.600(40.64)	1.800(45.72)
10	FWF50805-S10S22TB	1.800(45.72)	2.000(50.80)
11	FWF50805-S11S22TB	2.00(50.80)	2.200(55.88)
12	FWF50805-S12S22TB	2.20(55.88)	2.400(60.96)

**Ordering Information**

FWF 508 05 — S XX S 2 2 T B  
 1 2 3 4 5 6 7 8 9 10

- 1 Category: FWF—Wafer
- 2 Series Number: 508—Pitch5.08mm
- 3 Distinction No.: 05
- 4 Row Option: S—Single Row
- 5 Circuits: XX
- 6 Entry Angle: S—180° Vertical
- 7 Plating: 2—Tin Plated
- 8 Material—Resin: 2—PA66
- 9 Color—Resin: T—Transparent
- 10 Packaging: B—PE Bag



Recommended P.C.Board Layout

THIRD ANGLE PROJECTION	GENERAL TOLERANCES (UNLESS SPECIFIED)		APPROVE BY	DATE	PART NO.	ITEM NO.	
	X.±.012(0.30)	X'.±5'	FRANK	28/JUN/13	FWF50805-SXXS22TB	FWF50805	
DESIGN UNITS Inch (metric)	X.X±.008(0.20)	.X'±2'	CHECKED BY	DATE	TITLE		Building Technology Cornerstone
	X.XX±.006(0.15)	.XX'±1'	JACOB	28/JUN/13	Wire to Board (Wafer) Pitch 5.08mm 180° Vertical (DIP)		
SCALE	SIZE	X.XXX±.004(0.10)	.XX'±0.5'	DRAWN BY	DATE	THIS DRAWING CONTAINS INFORMATION THAT IS PROPRIETARY TO TXGA INDUSTRIAL ELECTRONICS(S.Z)CO.,LTD AND SHOULD NOT BE USED WITHOUT WRITTEN PERMISSION	
5:1	A4			CHERRY	28/JUN/13	REV 1	SHEET NO. 1/1